

Government of Jammu & Kashmir UT

**Agriculture Production & Farmers
Welfare Department Civil Secretariat
Jammu & Kashmir**

CITIZEN CHARTER

VISION

To look beyond subsistence agriculture by leveraging special agro-climatic conditions of the Union Territory for securing high returns to the farmers from transformed and modern, yet sustainable and inclusive Agriculture duly supported by introduction of innovative and globally validated farm technologies, raising of the requisite state of the art infrastructure and creation of an enabling ecosystem.

MISSION

To secure a complete transformation in the lives and outlook of the farmers of the UT from subsistence to modern, vibrant and high return Agriculture by the end of the year 2023. To dispel the image of agriculture as a means of sustenance and to promote in a big way agri-preneurship as a means of high return and respectable employment. Making maximum effort for aggregating farmers particularly youth and women into Interest Groups (FIGs) and Farmer Producer Organizations (FPOs) in product specific clusters to meet the objectives of Atamnirbhar Bharat. Making the most of funding and opportunities available under various CSS for securing the welfare of farmers of the UT.

OBJECTIVES

- Increasing production & productivity and return on investment in Agriculture for the welfare of the farmers;
- Making the farmers aware of latest inputs and innovations in agriculture and guide them through entire cultivation cycle to grow crops both for their captive as well as commercial consumption;
- Implementing on ground all the Centrally Sponsored Schemes in the realm of Agriculture;
- Providing HYV seeds/ Hybrids and quality planting material;
- Promotion of Soil Health through Integrated Nutrient Management and use of Soil Health Cards;
- Promoting Diversification in Cropping /Farming Systems and Organic Farming;
- Special focus on creation of irrigation infrastructure (Per Drop More Crop & Har Khet Ko Pani); Promotion of Post Harvest Management Practices, Integrated Pest Management and Prevention of Post Harvest Losses;
- Creation of post harvest Infrastructure in Agriculture such as Warehousing, Cold chains, Refer-Vans & Mandis;
- Promotion of Farm Mechanization with special focus on Hill Agriculture;
- Linking farmers with National Farm Market through e-NAM;
- Promotion of Ancillary activities such as Mushroom, Bee-keeping, Fisheries, Dairy, Small ruminants, Poultry, Farm-Forestry, Vermi-composting, etc.;

- Promotion of Value Addition, Branding, Tagging, Agri-preneurship and Micro Food Enterprises; Promotion of off season vegetables by way of Protected cultivation (Green houses, Net houses).
- Promotion of Social Schemes such as PM-KISAN, PM-Kisan Maan Dhan Yojana and Crop Insurance Scheme.

Introduction

The business of the Government of Jammu and Kashmir is transacted in accordance with the Transaction of Business of the Government of Union territory of Jammu and Kashmir Rules, 2019. These rules have been framed in exercise of the powers conferred by Presidential Order S.O No. 3937(E) dated 31st October, 2019 read with the third Proviso to Rule 7 and with Rule 43 of the said Rules. The executive powers of the Union territory are vested in the Hon'ble Lieutenant Governor of the Union territory who is assisted by Advisors. The Advisors are in-charge of one or more Administrative Departments. At the Secretariat level, the business of the Government is transacted through various Departments, headed by an Administrative Secretary. In terms of Transaction of Business of the Government of Union territory of Jammu and Kashmir Rules, 2019 following subjects are assigned to the Agriculture Production and Farmers Welfare Department:

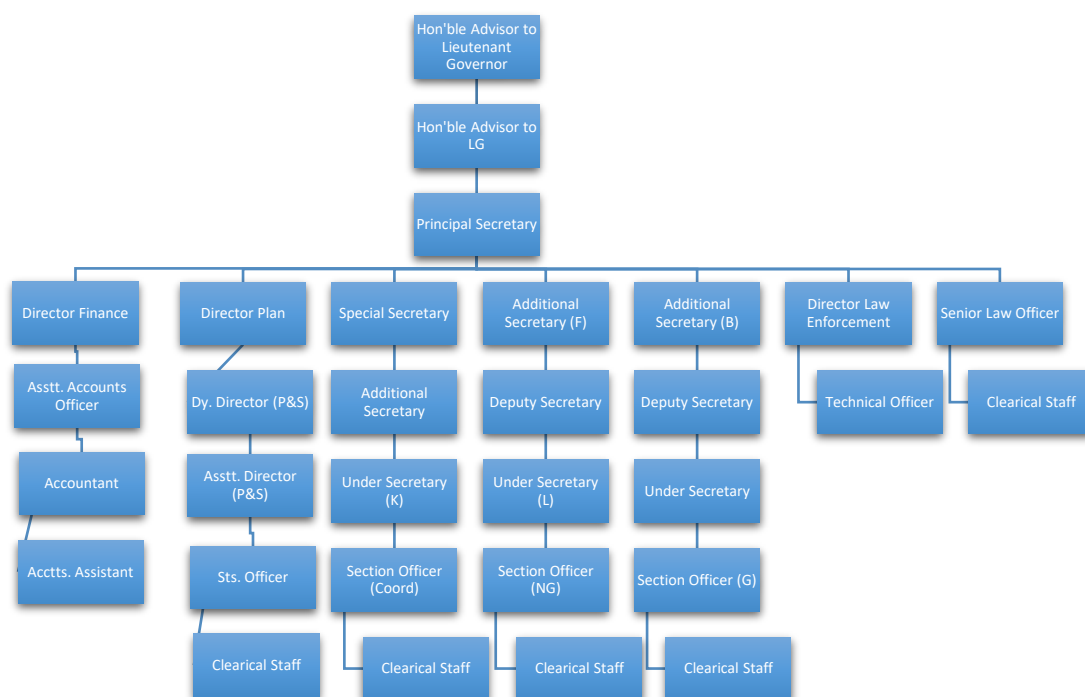
- Services
- Coordination of working of different of Government.
- Personnel Administration
- Secretariat Administration
- Right to Information
- Law Enforcement
- Development of Agriculture Sector

The Department functions under the supervision and guidance of the Hon'ble Lieutenant Governor, and the Hon'ble Advisor to Lieutenant Governor. The Department is headed by an Administrative Secretary, who happens to be of the rank of Secretary and above. At present, the Department is headed by Principal Secretary to Government. The Department plays a lead role in formulation of policies for smooth functioning of the Departments. It monitors and coordinates their working.

The Administrative Secretary of the Department is assisted by a team of officers of the rank of Special Secretary/Additional Secretaries/Deputy Secretaries and Under Secretaries.

Down-below the Under Secretary there is an established non-gazetted administrative hierarchy headed by the Section Officer. The procedures for dealing with the cases and the functions of the non-gazetted staff have been defined in Secretariat Manual. As per the Secretariat Manual, the Section Officer is empowered to dispose of certain issued at his own level or seek information from the concerned offices which he feels would be relevant for decision making.

With a view to dealing with the different issues pertaining to the Agriculture Production and Farmers Welfare Department, different Sections have been set up. The Structure of Organization is as under:-



FUNCTIONS:

1. To serve as an essential and effective link between the Agriculture Research Institutions and the farmers (*Lab to Land, Land to Land & Land to Lab*).
2. Human resource management and capacity building appropriate to need of the hour, to build a strong academic foundation for the scientific and technical man power and providing suitable technological trainings to the farming community.
3. To improve agriculture extension services by adopting new information technology with the involvement of farmers, NGOs, SHGs/FPOs and agriculture universities.
4. Skill Development of entrepreneurs through integrated approach by involving private sector also.
5. Dissemination of latest technology to the farmers through motivation, awareness cum training programmes, demonstrations, audio visual aids, electronic and print media, exposure visits, kisan melas, awards and incentives etc
6. Endeavoring for adequate and timely supply of inputs such as seeds, fertilizers, pesticides, agricultural credit and implements to farmers.
7. To undertake appropriate land use, soil health management and protection, conservation measures in order to minimize erosion through watershed approach and simultaneously increase the productivity of the land and income of the farmers.
8. To identify thrust areas in agriculture, which have relevance for future and initiate work so that emerging problem can be spotted and research directed towards their solution.
9. Developing suitable strategies for rainfed farming through people's participation and promotion of Integrated Farming System (IFS) approach for augmenting the income level of farming communities and enhancing the nutritional value of the food grains.
10. To implement various State and Centrally Sponsored Schemes and other developmental programmes for the benefit of the farming community.
11. To improve the Rural economy and socio-economic condition of the farming community and to explore new possibilities for high economic activity in the Agriculture Sector.
12. Infrastructure Development including Up-gradation of Seed Multiplication farms, Quality Control/Soil Testing Laboratories and Plant Health Clinics.
13. Promoting diversified and market driven farming systems.
14. Providing effective linkage between research institutes, Agriculture Universities of the UT for transfer of technology.
15. Providing of technical trainings to the extension staff through Research Institutes within and outside the UT,

15. SKUAST Jammu and SKUAST Kashmir and departmental trainings institutes.
16. Promoting avenues for private sector investment in agriculture through formation of Farmers' Interest Groups, Commodity Interest Groups, FPOs/FPCs etc.
17. Monitoring and Evaluation of schemes through department/ third party/ electronic mode.

Road Map

To realize the vision of transformation of our farmers economic conditions and prevent migration from rural areas to urban areas viz-a-viz reduce the rural urban divide for which the department of Agriculture is adopting specific strategies given as under:

- Increasing production & growth in Agriculture;
- Providing HYV seeds/ Hybrids and quality planting material;
- Promotion of Soil Health through Integrated Nutrient Management and use of Soil Health Cards;
- Promoting Diversification in Cropping /Farming Systems and Organic Farming;
- Special focus on creation of irrigation infrastructure (*Per Drop More Crop & Har Khet Ko Pani*);
- Promotion of Post Harvest Management Practices, Integrated Pest Management and Prevention of Post Harvest Losses;
- Creation of Infrastructure in Agriculture such as Warehousing, Cold chains, Refer-Vans & Mandis;
- Promotion of Farm Mechanization with special focus on Hill Agriculture;
- Linking farmers with National Farm Market through e-NAM;
- Promotion of Ancillary activities such as Mushroom, Bee-keeping, Fisheries, Dairy, Small ruminants, Poultry, Farm-Forestry, Vermicomposting, etc.;
- Promotion of Value Addition, Branding, Tagging, Agri-preneurship and Micro Food Enterprises;
- Promotion of off season vegetables by way of Protected cultivation (Green houses, Net houses).
- Promotion of Social Schemes such as PM-KISAN, PM-Kisan Maan Dhan Yojana and Crop Insurance Scheme;

CENTRALLY SPONSORED SCHEMES (CSS) UNDER IMPLEMENTATION IN AGRICULTURE.

S. No	Name of the Scheme.	Objective
1.	<p align="center"><u>Pradhan Mantri Krishi SinchayeeYojana (PMKSY)</u> Flagship scheme</p>	<p><u>Pradhan Mantri Krishi SinchayeeYojna (PMKSY):</u></p> <p><i>a) Achieve convergence of investments in irrigation at the field level preparation of district level and, if required, sub district level water use plans).</i></p> <p><i>b) Enhance the physical access of water on the farm and expand cultivable area under assured irrigation (Har Khet ko pani).</i></p> <p><i>c) Integration of water source, distribution and its efficient use, to make best use of water through appropriate technologies and practices.</i></p> <p><i>c) Improve on-farm water use efficiency to reduce wastage and increase availability both in duration and extent,</i></p> <p><i>d) Enhance the adoption of precision-irrigation and other water saving technologies (More crop per drop).</i></p> <p><i>e) Enhance recharge of aquifers and introduce sustainable water conservation practices.</i></p> <p><i>f) Ensure the integrated development of rainfed areas using the watershed approach towards soil and water conservation, regeneration of ground water, arresting runoff, providing livelihood options and other NRM activities.</i></p> <p><i>g) Promote extension activities relating to water harvesting, water management and crop alignment for farmers and grass root level field functionaries.</i></p> <p><i>h) Explore the feasibility of reusing treated municipal waste water for peri urban agriculture, and</i></p> <p><i>i) Attract greater private investments in irrigation.</i></p> <p><i>This will in turn increase agricultural production and productivity and enhance farm income</i></p>
		<p><u>Pradhan Mantri Fasal Bima Yojana (PMFBY):</u></p> <p><i>Aims at supporting sustainable production in Agriculture sector by way</i></p>

2.	<p style="text-align: center;"><u>Pradhan Mantri Fasal Bima Yojana</u> <u>(PMFBY)</u> Flagship Scheme</p>	<p>of:</p> <ul style="list-style-type: none"> ❖ <i>Providing financial support to farmer suffering crop loss/damage out of unforeseen events.</i> ❖ <i>Stabilizing the income of the farmers to ensure their continuous in farming.</i> ❖ <i>Ensuring flow of credit to Agriculture Sector; which will contribute to food security, Crop diversification and enhancing growth and competitiveness of Agriculture Sector besides protecting farmers from production risks.</i> ❖ <i>Encouraging farmer to adopt innovative and modern Agriculture practices.</i> ❖ <i>Mitigating the financial risks of farmer suffering from crop losses.</i>
3.	<p style="text-align: center;"><u>Rashtriya Krishi Vikas Yojana-RAFTAAR</u> <u>(RKVY – RAFTAAR):</u></p>	<p><u>Rashtriya Krishi Vikas Yojana-RAFTAAR (RKVY – RAFTAAR):</u> <i>This is primarily a district based scheme formulated on basis of Comprehensive District Agriculture Plans (c-DAP). It provides flexibility to states to formulate projects based on District specific needs keeping in view the resources and scope. Various projects related to Pre harvest infrastructure, post harvest infrastructure value added production and Agri-business, flexi funds, special schemes and innovation & Entrepreneur Dev. have been taken up under the scheme which includes major projects namely Protected cultivation, creation of infrastructure, installation of ropeways , Development of infrastructure for promotion of marketing and Post harvest management , Seed testing laboratory, Promotion of Bee-keeping and Mushroom, Increase in SRR, FPO etc.</i></p> <p>a) <u>National Mission on Saffron:</u> <i>National Mission on Saffron is a sub scheme of Rashtriya Krishi Vikas Yojana; It was launched in the State in 2010-11 but the actual projects was taken up during 2011-12. The programme has been launched with the main objectives to increase quality production of saffron and its marketing the project was launched in a 120 hect of traditional area in Kishtwar district of Jammu division. The major intervention under the scheme includes Rejuvenation/Replanting, Quality corm production in public nurseries, Creation of irrigation Infrastructure, Enhancing Production Quality through Solar Dryers, Saffron Mechanization, Transfer of technology through Trainings and lying out of</i></p>

		<p><i>adaptive trials in non traditional areas.</i></p> <p><u>b) National Vegetable Initiative for Urban Clusters (merged with RKVY Normal from 2014-15 onward):</u></p> <p><i>This project was launched under Rashtriya Krishi Vikas Yojana during the year 2011-12 under which the clusters of vegetable cultivation have been taken up in and the Jammu City to boost the production of vegetables & assure availability of vegetables at affordable rates keeping in view the safety & good quality. The initiative aims at providing end- to-end linkage in vegetable production, marketing and processing with back-up support by the Small Farmers Agri Business Consortium (SFAC). The various interventions namely Promotion of Farmer Associations/Groups, Base line survey, High Yielding Varieties (HYV) Vegetable seed and Seedling production, Organic Farming, Vermicompost Units and Vermibeds, Vegetable Cultivation in Open Condition, Protected Cultivation through Green Houses ,Integrated NutrientManagement (INM)/ Integrated Pest Management (IPM), Post Harvest Management and Marketing by creating infrastructure such as collection centers, cold storage , Refer vans , Onion Storage Structures, Motorized Vending Carts , Static Vending Carts etc and Training of Farmers have been taken up under the scheme. From 2015-16 this Sub - scheme is being emerged with Rashtriya Krishi Vikas Yojana (Normal).</i></p>
4.	<p><u>National Mission on Agricultural Extension and Technology (NMAET)</u></p>	<p><i>This Centrally Sponsored Scheme includes following sub-Mission:</i></p> <p><u>(a) Sub Mission on Agricultural Extension (ATMA):</u></p> <p><i>The scheme is devoted to extend the reach of new and improved Agricultural technology to the farthest corner of the State with a participatory approach. Awareness programmes, Training camps, Crop Demonstrations Exposure visits, Exhibitions, Kissan Ghoshties, Farmers Scientist interactions and Farm schools (FS) are key elements of the scheme. Under the scheme Strategic Research and Extension Plan (SREP) has been developed with the support of Agriculture and allied Departments, KVK and various other stakeholders.</i></p> <p><u>(b) Sub- Mission on Seeds and Planting Material (SMSP):</u></p> <p><i>The Sub -Mission on Seeds and Planting Material of Centrally Sponsored Scheme under "National Mission on Agricultural Extension and Technology (NMAET)" covering the entire gamut of seed production</i></p>

		<p><i>chain from production of seed to supply of certified seeds to the farmers, to provide support for creation of infrastructures conducive for development of the seed sector.</i></p> <p><i>The major focus of the scheme is on enabling the farmers to produce quality seed of new and improved varieties of crops and train them in its proper storage. Foundation/ Certified seed is provided to farmers on 50% subsidy for quality seed production, the farmers are trained in quality seed production, storage and protection,</i></p> <p><i>The farmers are advised to share the seed so produced among fellow farmers so as to reduce dependence on fresh purchase every year and improves the quality of farm saved seed. The major sub component covered under the scheme namely Seed Village Programme, National Seed Reserve for contingency plan , Strengthening of Seed Quality Control labs, Support to Seed Certification Agency, Seed Treatment, Seed Processing unit and Seed Storage Godowns at Panchayat level , Transport subsidy etc .</i></p> <p><u>(C)Sub- Mission on Agricultural Mechanization:</u></p> <p><i>The Sub- Mission on Agricultural Mechanization of Centrally Sponsored Schemes National Mission on Agricultural Extension and Technology (NMAET) extended to this State during the year 2014-15</i></p> <p><i>The scheme lays primarily focus on creating awareness by organizing trainings/ Demonstrations, Increasing the reach of farm mechanization to small and marginal farmers by providing subsidies , Promoting „Custom Hiring Centres“ to offset the adverse economies of scale arising due to small landholding and high cost of individual ownership ,Establishment of Farm Machinery Banks for Custom Hiring, Promotion of Farm Mechanization in Selected Villages and Ensuring performance testing and certification at designated testing centres.</i></p>
		<p><u>National Mission on Sustainable Agriculture (NMSA):</u></p> <p><i>This scheme was launched in the state during 2014-15 with the objectives to enhance agricultural productivity especially in rain fed areas focusing on integrated farming, water use efficiency, soil health management and synergizing conservation. Besides, promoting location specific improved agronomic practices through soil health management, enhanced water use efficiency, judicious use of chemicals, crop diversification, progressive adoption of crop-livestock farming systems</i></p>

<p>5.</p>	<p><u>National Mission on Sustainable Agriculture (NMSA).</u></p>	<p>and integrated Farming System (IFS) based approaches like Agri-Horti , crop-sericulture, agro-forestry, fish farming etc. This scheme include following programmes.</p> <p>a) <u>Rain-fed Area Development Programme:</u> Under this programme cluster based approach is being adopted for development and conservation of natural resources along with farming system. Eleven numbers of clusters has been identified for its development in Jammu Division under the programme. Under this component appropriate farming system by integrating multiple component of agriculture such as crops, horticulture, livestock, fishery, forestry with agro based income generating activities and value addition is being adopted . Besides, soil test/soil health card based nutrient management practices, farmland development, resource conservation and crop selection conducive to local agro climatic condition is also being promoted under this component.</p> <p>b) <u>Soil Health Management (SHM):</u> This Programme aim at promoting location as well as crop specific sustainable soil health management including residue management, organic farming practices by way of creating and linking soil fertility maps with macro-micro nutrient management, appropriate land usebased on land capability, judicious application of fertilizers and minimizing the soil erosion/degradation. Assistance will be provided for various improved package of practices based on land use and soilcharacteristics, generated through geographical information system (GIS) based thematic maps and database on land and soil characteristicsthrough extensive field level scientific surveys.</p> <p><u>Soil Health Card (SHC): Flagship Scheme</u> This scheme was launched in the state from 2014-15 to promote the soil testing services, issue of soil Health Cards and development of Nutrient Management Practices. The following are the major objective under the scheme;</p> <ul style="list-style-type: none"> • To issue soil health cards within 3 years to 6.44 lakhs farmers of the Jammu Division, so as to provide a basis to address nutrient deficiencies in fertilization practices. After three years the sameprocess shall be adopted to cover all the families during the next three year for re-issuing the Soil Health Card.
-----------	--	---

- To strengthen functioning of Soil Testing Laboratories (STLs) through capacity building, involvement of agriculture students and effective linkage with Indian council of Agricultural Research (ICAR) / State Agricultural Universities (SAUs)
- To diagnose soil fertility related constraints with standardized procedures for sampling uniformly across states and analysis and design taluka / block level fertilizer recommendations in targeted districts.
- To develop and promote soil test based nutrient management in the districts for enhancing nutrient use efficiency.
- To build capacities of district and state level staff and of progressive farmers for promotion of nutrient management practices.

d) Climate Change and Sustainable Agriculture Monitoring, Modelling and Networking (CCSAMMN):

This scheme provide creation and bidirectional (land/farmers to research/scientific establishments and vice versa) dissemination of climate change related information and knowledge by way of piloting climate change adaptation/mitigation research/model projects in the domain of climate change smart sustainable management practices and integrated farming system suitable to local agro-climatic conditions. A consortium approach shall be evolved with various stake holders including knowledge partners like state Agricultural Universities (SAUs), Krishi Vigyan Kendras (KVKs), Indian Council of Agricultural Research (ICAR) Institutes etc. by the State Government to provide single window service/knowledge provider system for the benefit of farming community. Climate change related monitoring, feedback, knowledge networking and skill development will also be supported under this component. Budhal Block in Rajouri District is identified under this project as pilot basis to study the affect of climate change.

Paramparagat Krishi Vikas Yojana (PKVY):

This is a Traditional Farming Improvement Programme and is being launched in J&K state during 2015-16 to support and promote organic farming and thereby improving soil health. This will encourage farmers to adopt eco-friendly concept of cultivation and reduce their dependence on fertilizers and agricultural chemicals to improve the yield .Cluster approach shall be adopted to implement the scheme.

6.	<p style="text-align: center;"><u>National Food Security Mission (NFSM).</u></p>	<p><u>National Food Security Mission (NFSM):</u> <i>The National Food Security Mission (NFSM) was launched in the state during the year 2011-12 covering only Rice crop in three districts. At present the mission is covering four crops namely Rice, Wheat, Pulses and Maize.</i> <i>Pulses and Maize is under implementation in all the 22 districts of the state where as Rice and wheat is under implementation in the eight districts each in the state. One more component Nutri- Cereals extended in the J&K State from 2019-20.</i> <i>The scheme lays primarily focus on increasing production and productivity of rice, wheat, pulses and coarse cereals (Maize), Restoring soil fertility and productivity at the individual farm level, Enhancing farm level economy (i.e. farm profits) to restore confidence amongst the farmers.</i> <i>The major interventions under the mission are Cluster Demonstration, Distribution of HYV/ Hybrid seed, Plant and soil protection management, Resource conservation Techniques / Tools, Efficient water applications & Tools, Trainings and local initiatives.</i></p> <p><u>National Mission on Oilseeds and Oil-Palm (NMOOP):</u> <i>The scheme ISOPOM restructured as National Mission on Oilseeds and Oilpalm (NMOOP) during 2014-15 and is under implementation on yearly basis to boost production and productivity of Oilseed in the Division. Various interventions such as distribution of quality seed of Oilseeds , Organization of training programmes , Farmer Field School (FFS) on Integrated Pest Management (IPM) , Providing of Plant Protection Chemicals, Bio-fertilizers, Weedicides , PP equipments and Improved Farm Implements etc. on subsidy have been taken up under the scheme to promote the oilseeds crop in Jammu Division. The scheme has been implemented in a mission mode through active involvement of the various stakeholders with main strategies which includes increasing Seed Replacement Rate (SRR) with focus on Varietal Replacement, increasing irrigation coverage and introducing diversification through intercropping and cultivation oilseed crop in fallow land.</i></p>
8.	<p style="text-align: center;"><u>Pradhan Mantri Kisan Samman Nidhi (PM-KISAN)</u></p>	<p><u>Pradhan Mantri Kisan Samman Nidhi (PM-KISAN):</u> <i>To provide Income support and to supplement the financial needs of the eligible farmers in procuring various inputs to ensure proper crop health</i></p>

		<p><i>& appropriate yields, commensurate with the anticipated farm income.</i></p>
<p>9.</p>	<p><u>Pradhan Mantri KisanMaanDhan Yojana (PM-KMY)</u> (9th August, 2019)</p>	<p><u>Pradhan Mantri Kisan Maan Dhan Yojana (PM-KMY):</u> <i>The Government of India has introduced an old age pension scheme for all land holding Small and Marginal Farmers (SMFs) in the country, namely, the "Pradhan Mantri Kisan Maan-Dhan Yojana (PM-KMY)", as a voluntary and contributory pension scheme for the entry age group of 18 to 40 years. The Scheme is effective from the 9th August, 2019.</i> <i>There have been a series of interventions for income and price support by the Government for farmers. However, there is a felt need to create a social security net for the farmers as old age may result in loss of livelihood for many of them. Farming requires hard work in fields which becomes difficult at an advanced age. The problem is compounded in respect of small and marginal farmers as they have minimal or no savings to provide for old age. The Pradhan Mantri Kisan Maan-Dhan Yojana (PM-KMY) provides for an assured monthly pension of Rs. 3000/- to all land holding Small and Marginal Farmers (SMFs), whether male or female, on their attaining the age of 60 years. Farmers falling within the purview of the exclusion criteria (as defined in Para 5 of OGs) are, however, not eligible for the benefit. The key features and other consequential benefits accruing to the subscribers of the Scheme are detailed further in these guidelines.</i></p>

SERVICES PROVIDED TO THE FARMERS & OTHER STAKEHOLDERS

S.No.	Service & Detail	Eligibility Criteria for availing the benefit	Documents to be provided	Time Limit	Contact Person
1.	<p><u>Supply of Seed & Planting Material:</u></p> <p>Distribution of quality seeds and planting material at subsidized rates up to the nearest farm gate level of the farming community. The seeds as per season, agro climatic crop zone of the recommendation are made available at Departmental Stores and through additional Seasonal Outlets also. The seeds are pre tested for conformity to Seed Act 1966.</p>	All category of Farmers	KCC Card or AADHAR card for proof of residence and availing subsidy.	First cum first serve basis	<p>Agriculture Extension Assistant (Panchayat Level)</p> <p>Agriculture Extension Officer (Zonal level)</p> <p>SDAOs (Sub-Divisional Level)</p> <p>CAOs (District Level)</p>
2.	<p><u>Supply of Manure and Fertilizers:</u></p> <p>The fertilizer distribution network operates through supply chain involving Fertilizer Supplying Companies, their wholesale dealers and licensed retailers in all the farming catchment areas. Facility of cashless purchase of fertilizers for farmers through QR Codes installed by the retailer.</p>	All categories of Farmers	KCC Card or AADHAR card for proof of residence and availing subsidy.	First cum first serve basis	<p>Agriculture Extension Assistant (Panchayat Level)</p> <p>Agriculture Extension Officer (Zonal level)</p> <p>SDAOs (Sub-Divisional Level)</p> <p>CAOs (District Level)</p>
3.	<p><u>Supply of PP Chemicals:</u></p> <p>Licensed PP Chemical dealers authorized for stock, display and sale operates in different areas within and outside municipal limits for the facility of farmers</p>	All categories of Farmers	-	-	Private Business under the regulatory control of UT Government.
4.	<p><u>Farm Machinery & Infrastructure :</u></p> <p>Open choice to farmers for purchase of approved and tested farm machinery.</p>	All categories of Farmers.	Prescribed Application form along with other	30 days from the date of submission of the documents	<p>Agriculture Extension Assistant (Panchayat Level)</p> <p>Agriculture Extension Officer (Zonal</p>

	For other infrastructure such as Bore wells, Dug wells, Micro irrigation, Pump sets, Check Dams, WHTs., etc. Applications are invited for consideration as per Budgetary provisions. Further for all other infrastructure applications are invited for consideration as per Budgetary provisions.		required documents	subject to fulfillment of the eligibility of the applicant and to the availability of funds.	level) SDAOs(Sub-Division Level) CAOs (District Level)
5.	<u>Soil Health Card:</u> Soil Health Card is provided to all farmers for testing of soil health along with recommendations for application of plant nutrients.	All categories of Farmers.	Prescribed Application form along with other required documents		Agriculture Extension Assistant (Panchayat Level) Agriculture Extension Officer (Zonal level) SDAOs (Sub-Division Level) CAOs (District Level)
6.	<u>Kisan Credit Card:</u> KCC is provided to all categories of farmers for timely access to credit at cheaper rates. Short term credit at 7% interest up to Rs. 3 Lakhs for a maximum period of 1 year. Additional incentive of 3 % interest subvention for farmers for prompt payment. No credit guarantee for KCC loans upto Rs.1.60 lakhs.	All categories of Farmers.	Prescribed Application form along with other required documents		Submission of application of individual beneficiaries by Agriculture Department. Land records authentication by revenue department. Issuance of KCC by the concerned bank.
7.	<u>Crop Insurance:</u> Pradhan Mantri Fasal Bima Yojna (PMFBY) cover is provided to all categories of farmers for the notified crops i.e. Paddy, Maize and Wheat.	All categories of Farmers (The scheme is optional)	Prescribed Application form along with other required documents		The KCC holders having records in the bank can approach Bank/CFC for premium deduction under crop insurance and get coverage. In case of Non Loanee farmers the applicant shall submit revenue authenticated records and after verification by the Agriculture Extension Officer he can approach the bank/CFC for premium payment and get insurance coverage.

8.	<p><u>Plant Protection Services:</u></p> <p>Regular advisory is being provided regarding incidence/control of insects, pests and diseases. Insect pest and disease samples are being collected at Plant Health Clinics working in all districts for timely and right diagnosis. Distribution of pesticide / storage bins and equipment at 50% subsidy</p>	All categories of Farmers.	Prescribed Application form along with other required documents		<p>Agriculture Extension Assistant(Panchayat Level)</p> <p>Agriculture Extension Officer (Zonal level)</p> <p>SDAOs(Sub-Division Level) CAOs (District Level)</p>
9.	<p><u>PM Kisan Samaan Nidhi Yojana(PM-KISAN):</u></p> <p>A minimum income support of Rs 6000/Annum in 3 equal installments after every 04 months is provided to all eligible land holding families with cultivable land. All PM KISAN cases have been linked with KCC.</p>	All farmers other than falling in exclusion category.	Prescribed Application form along with other required documents.		<p>Submission of application of individual beneficiaries by Agriculture Department.</p> <p>Land records authentication by revenue department.</p> <p>Uploading of verified data of individual beneficiaries in PMKISAN Portal by Department of Agriculture Payment through DBT in beneficiary's bank account.</p>
10.	<p><u>PM Kisan Maandhan Yojana (PMKMY):</u></p> <p>PMKMY is a government scheme meant for old age protection and social security of Unorganized workers/farmers.</p> <p>Features</p> <ul style="list-style-type: none"> • A Monthly contribution of Rs.60-Rs.200 for all categories of farmers in the age group of 18-40 years. • Assured Pension of Rs. 3000/- month • Voluntary and Contributory Pension Scheme • Matching Contribution by the Government of India 	<p>Eligibility</p> <p>For Unorganized Workers (UW)</p> <p>Monthly Income up to Rs 15000/-</p> <p>A Monthly contribution of Rs.60-Rs.200 for all categories of farmers in the age group of 18-40 years.</p>	Prescribed Application form along with other required documents.		<p>Apply online https://maandhan.in/shramyogi</p>

QUALITY CONTROL SERVICES

S.No.	Services /Transactions	Responsible Person	Process	Document required	Fees		
					Category	Mode	Amount
1	Seed Testing	Seed Analyst, I/C Seed Testing Laboratory– Jammu/Srinagar	Seed Quality Analysis	Seed sample details	NA	NA	NA
2	Fertilizer Testing	Agriculture Chemist, I/C Fertilizer Testing Laboratory– Jammu / Srinagar	Fertilizer Quality Analysis	Fertilizer Sample details in Form P&K	NA	NA	NA
3	Bio-Fertilizer & Organic Fertilizer Testing	Agriculture Chemist, I/C Bio-Fertilizer & Organic Fertilizer Quality Testing– Jammu/Srinagar	Bio-Fertilizer & Organic Fertilizer quality Analysis	Fertilizer Sample details in Form P&K	NA	NA	NA
4	Pesticide Testing	Agriculture Chemist, I/C Fertilizer Testing Laboratory– Jammu / Srinagar	Pesticide Quality Analysis	Pesticide Sample details	NA	NA	NA
5	Soil Testing	Agriculture Chemist, Directorate of Agriculture & Farmers Welfare, Jammu/Kashmir (Labs in all 20 districts)	Soil Quality Analysis with recommendations	Soil Sample and farmers details	Major Nutrients	NA	Free Analysis
					Micro Nutrients	NA	Free Analysis
6	Plant Health Clinic	Plant Doctors deployed at the Static and Mobile Plant Health Clinics	Diagnosis of damaged / infected plant samples with recommendations	Plant sample and Farmers Area detail	Biotic and Abiotic Stresses Diagnosis and recommendations for management	NA	Free Analysis

ONLINE LICENSING SERVICES

S.No.	Services / Transactions	Responsible Person	Process/Document required	Fees		
				Category	Mode	Amount
1	Seed Dealer license*	Wholesale: Joint Director of Agriculture(Ext.)	As per online services hosted on Jk.gov.in/jkservices/home	Fresh/Renewal	Treasury Challan	₹ 1500/-
		Retail: Chief Agriculture Officer		Fresh/Renewal	Treasury Challan	₹ 500/-
2	Fertilizer Dealer license	Wholesale: Joint Director of Agriculture(Ext.)	As per online services hosted on Jk.gov.in/jkservices/home	Fresh /Renewal	Treasury Challan	₹ 5000/-
		Retail: Chief Agriculture Officer		Fresh/Renewal	Treasury Challan	₹ 1500/-
3	Pesticide Wholesale / Retail Dealer license	Plant Protection Officer, Jammu	As per online services hosted on Jk.gov.in/jkservices/home	Fresh	Treasury Challan	Urban- ₹ 7500/- Rural- ₹ 1500/-

*Online rolling out shortly.

GRIEVANCES READDRESSAL MECHANISM (PIOS UNDER RTI ACT 2005)

Names & Addresses of Public Information Officers/ first Appellate Authority under Right to Information
RTI Act, 2005

S. No.	Level	Name of the Public Information Officer along with the Designation and Contact Nos.	Name of the First Appellate Authority along with the Designation and Contact Nos.
1.	Public Information Officer	Sh. Lafief Ahmed Joo (Non-Gazatted) Under Secretary to Government Mobile No. 9419173692 e-mail ID: latiefahmad100@gmail.com	Shri. Mohammad Farooq Dar Additional Secretary Mob.No.-9419137242 Email-id: mohdfarooq2019@gmail.com
2.	Public Information Officer	Mrs. Kritika Raina (Gazatted) Under Secretary to Governemnt Mobile No. 9596617043 e-mail ID: kritikaraina3dec@gmail.com	

Cost Norms and Pattern of Assistance under various Centrally Sponsored Schemes (CSS):

Type of Agriculture Machinery	SC/ST/ S&M/ Women Farmer		Other Category Farmer	
	Max. Permissible subsidy / Machine/ Equipment / beneficiary	Pattern of Assistance	Max. Permissible subsidy / Machine/ Equipment / beneficiary	Pattern of Assistance
Tractors				
(i) Tractor 2WD (08-20 PTO HP)	Rs. 2.00 lakh	50%	Rs. 1.60 lakh	40%
(ii) Tractor 4WD (08-20 PTO HP)	Rs. 2.25 lakh	50%	Rs. 1.80 lakh	40%
(iii) Tractor 2WD (above 20-40 PTO HP)	Rs. 2.50 lakh	50%	Rs. 2.00 lakh	40%
(iv) Tractor 4WD (above 20-40 PTO HP)	Rs. 3.00 lakh	50%	Rs. 2.40 lakh	40%
(v) Tractor 2WD (above 40-70 PTO HP)	Rs. 4.25 lakh	50%	Rs. 3.40 lakh	40%
(vi) Tractor 4WD (above 40-70 PTO HP)	Rs. 5.00 lakh	50%	Rs. 4.00 lakh	40%
Power Tillers				
(i) Power Tiller (below 8 BHP)	Rs. 0.65 lakh	50%	Rs. 0.50 lakh.	40%
(ii) Power Tiller (8 BHP & above)	Rs. 0.85 lakh	50%	Rs. 0.70 lakh.	40%
Rice Transplanter				
Self Propelled Rice Transplanter (4 rows)	Rs.1.50 lakh	50%	Rs. 1.20 lakh	40%
Self Propelled Rice Transplanter				
(i) above 4-8 rows	Rs. 5.00 lakh.	50%	Rs. 4.00 lakh	40%
(ii) above 8-16 rows	Rs. 8.00 lakh.		Rs. 6.50 lakh	
Self Propelled Machinery				
Reaper cum Binder (3 wheel)	Rs. 1.75 lakh	50%	Rs. 1.40 lakh	40%
Reaper cum Binder (4 wheel)	Rs. 2.50 lakh		Rs. 2.00 lakh	

(i) Reaper	Rs. 0.75 lakh	50%	Rs. 0.60 lakh	40%
(ii) Post Hole Digger/Auger	Rs. 0.75 lakh		Rs. 0.60 lakh	
(iii) Pneumatic/ other Planter	Rs. 0.90 lakh		Rs. 0.70 lakh	
Self Propelled Horticultural Machinery				
(i) Track Trolley	Rs. 2.00 lakh	50%	Rs. 1.60 lakh	40%
	Rs. 2.00 lakh		Rs. 1.60 lakh	
	Rs. 2.00 lakh		Rs. 1.60 lakh	
(ii) Nursery Media Filling Machine	Rs. 0.50 lakh		Rs. 0.40 lakh	
(iii) Multipurpose Hydraulic System				
(iv) Power operated horticulture tools for pruning, budding, grating, shearing etc.				
Tractor/Power Tiller (below 20 BHP) driven equipments				
A. Land Development, tillage and seed bed preparation equipments:				
(i) MB Plow	Rs. 0.20 lakh	50%	Rs. 0.16 lakh	40%
(ii) Disc Plow				
(iii) Cultivator				
(iv) Harrow				
(v) leveler Blade				
(vi) Cage wheel				
(vii) Furrow opener				
(viii) Ridger				
(ix) Weed slasher				
(x) Furrow opener	Rs.0.40 lakh	50%	Rs. 0.32 lakh	40%
(xi) Bund former				
(xii) Crust breaker				
(xiii) Rotopuddler				
(xiv) Rotocultivator				
(xv) Power Harrow				
Chisel Plough	Rs. 0.10 lakh	50%	Rs. 0.08 lakh	40%
B. Sowing, Planting, Reaping and Digging Equipments:				
(i) Post Hole digger	Rs 0.30 lakh	50%	Rs. 0.24 lakh	40%

(ii) Potato Planter				
(iii) Potato Digger				
(iv) Ground nut digger				
(v) Strip till drill				
(vi) Tractor drawn reaper				
(vii) Onion harvester				
(viii) Rice straw Chopper,				
(ix) Raised Bed Planter				
(x) Sugar cane cutter/Stripper				
(xi) Planter,				
(xii) Multi crop planter				
(xiii) Zero –till multi crop planter				
(xiv) Ridge furrow planter				
(i) Pneumatic Planter	Rs. 0.50 lakh	50%	Rs. 0.40 lakh	40%
(ii) Pneumatic vegetable transplanter,				
(iii) Pneumatic vegetable seeder				
(iv) Plastic Mulch Laying Machine				
(v) Raised Bed Planter with inclined plate planter and shaper attachment.				
(i) Seed treating drum	Rs. 0.15 lakh	50%	Rs. 0.12 lakh	40%
(ii) Seed cum fertilizer drill (5 tines)				
(iii) Aqua ferti Seed drill (5-7 tines)				
C. Inter Cultivation Equipments:				
(i) Grass Weed Slasher	Rs. 0.25 lakh	50%	Rs. 0.20 lakh	40%
(ii) Power Weeder (engine operated below 2 bhp)				
D. Equipments for Residue management/Hay and Forage Equipments:				
(i) Sugarcane thrash Cutter	Rs. 0.25 lakh	50%	Rs. 0.20 lakh	40%
(ii) Coconut Frond Chopper,				
(iii) Straw reaper				
(iv) Stubble shaver				
E. Harvesting & Threshing Equipments (Operated by engine/ electric motor below 3 hp and by power tiller , and tractor of below 20 BHP tractor):				
(i) Ground Nut Pod Stripper	Rs. 0.30 lakh	50%	Rs. 0.25 lakh	40%
(ii) Thresher				
(iii) Multi crop Threshers				

(iv) Paddy Thresher (v) Brush Cutter (vi) Winnowing fan (vii) Maize sheller (viii) Mower (ix) Flail Harvester (x) Mower Shredder (ALL PURPOSE/All crops)				
F. Chaff Cutter (Operated by engine/electric motor below 3 hp and by power tiller , and tractor of below 20 BHP tractor)	Rs. 0.20 lakh	50%	Rs. 0.16 lakh	40%
Tractor (above20- 35 BHP) driven equipments				
A. Land Development ,tillage and seed bed preparation equipments:				
(i) MB Plow	Rs. 0.30 lakh	50%	Rs. 0.25 lakh	40%
(ii) Disc Plow (iii) Cultivator (iv) Harrow (v) leveler Blade (vi) cage wheel (vii) Furrow opener (viii) Ridger (ix) Weed slasher				
(x) Rotopuddler (xi) Furrow opener (xii) Bund former (xiii)Crust breaker (xiv) Rotocultivator (xv) Power Harrow	Rs.0.60 lakh	50%	Rs. 0.50 lakh	40%
(xvi) Rotavator 5 feet	Rs. 0.42 lakh	50%	Rs. 0.34 lakh	40%
(i) Chisel Plough	Rs. 0.20 lakh	50%	Rs. 0.16 lakh	40%
(xvii) Reversible Hydraulic plough(2 bottom)	Rs. 0.70 lakh	50%	Rs. 0.56 lakh	40%
(i) Reversible Mechanical plough(2 bottom)	Rs. 0.40 lakh	50%	Rs. 0.32 lakh	40%

(ii) Laser Land Leveller	Rs. 2.00 lakh	50%	Rs. 1.60 lakh	40%
B. Sowing , Planting ,Reaping and Digging Equipments:				
(i) Post Hole digger	Rs. 0.40 lakh	50%	Rs. 0.30 lakh	40%
(ii) Potato Planter				
(iii) Potato Digger				
(iv) Ground nut digger				
(v) Tractor drawn reaper				
(vi) Onion harvester				
(vii) Raised Bed Planter				
(ix) Sugar cane cutter/Stripper				
(x) Multi crop planter,				
(xi) Ridge furrow planter				
(i) seed drill (7 tines)	Rs. 0.18 lakh	50%	Rs. 0.16 lakh	40%
(ii) zero -till multi crop				
(iii) Seed treating drum				
(iv) Seed cum fertilizer drill (7 tines)				
(i) Direct Rice Seeder	Rs. 0.20 lakh	50%	Rs. 0.16 lakh	40%
(i) Pneumatic Planter	Rs. 0.75 lakh	50%	Rs. 0.60 lakh	40%
(ii) Pneumatic vegetable transplanter				
(iii) Pneumatic vegetable seeder				
(iv) Plastic Mulch Laying Machine				
(v) Aqua ferti seed drill				
(vi) Raised Bed Planter with inclined plate planter and shaper attachment.				
(i) Happy/Turbo Seeder	Rs. 0.728 lakh	50%	Rs. 0.582 lakh	40%
C. Inter Cultivation Equipments:				
(i) Grass Weed Slasher	Rs. 0.35 lakh	50%	Rs. 0.30 lakh	40%
(ii) Power Weeder				
(engine operated above 2 bhp)				
D. Equipments for Residue Management/Hay and Forage Equipments:				
(i) Sugarcane thrash Cutter	Rs. 0.40 lakh	50%	Rs. 0.30 lakh	40%
(ii) Coconut Frond Chopper,	Rs. 0.40 lakh	50%	Rs. 0.30 lakh	40%
(iii) Rake (small capacity)	Rs. 0.75 lakh	50%	Rs. 0.60 lakh	40%
(iv) Balers(Round) (below14 kg per bale)	Rs. 1.50 lakh	50%	Rs. 1.20 lakh	40%

(v) Straw reaper	Rs. 0.75 lakh	50%	Rs. 0.60 lakh	40%
(vi) Feed block machine(100- 200 kg/hr)	Rs. 1.50 lakh	50%	Rs. 1.20 lakh	40%
(vii) Stubble shaver	Rs. 0.40 lakh	50%	Rs. 0.30 lakh	40%
(viii) Straw Chopper /Shreder/Mulcher Mounted type 5 ft	Rs.0.672 Lakh	50%	Rs. 0.538 lakh	40%
(ix) Trailor / Trolly (upto 3 ton capacity)	Rs. 0.60 Lakh	50%	Rs. 0.50 Lakh	40%
E. Harvesting & Threshing Equipments (Operated by engine/electric motor below 5 bhp and by power tiller , and tractor of below 35 BHP tractor				
(i) Ground Nut Pod Stripper	Rs. 0.40 lakh	50%	Rs. 0.30 lakh	40%
(ii) Thresher				
(iii) Multi crop Threshers				
(iv) Paddy Thresher				
(v) Brush Cutter				
(vi) Maize sheller				
(vii) Mower				
(viii) Flail Harvester				
(ix) Mower Shredder (ALL PURPOSE/All crops)				
(I) Reaper cum binder (Tractor Drawn)	Rs. 0.125 lakh	50%	Rs. 1.00 lakh	40%
F. Chaff Cutter (Operated by engine/electric motor above 3- 5 hp and by power tiller , and tractor of below 35 BHP tractor)	Rs. 0.28 lakh	50%	Rs. 0.22 lakh	40%
A. Land Development ,tillage and seed bed preparation equipments:				
(i) MB Plow	Rs. 0.50 lakh	50%	Rs. 0.40 lakh	40%
(ii) Disc Plow				
(iii) Cultivator				
(iv) Harrow				
(v) Leveler Blade				
(vi) Cage wheel				
(vii) Furrow opener				
(viii) Ridger				
(ix) Weed slasher	Rs. 2.00 lakh	50%	Rs. 1.60 lakh	40%
(x) Laser Land Leveller	Rs. 2.00 lakh	50%	Rs. 1.60 lakh	40%
Rotavator				

(xi) 5 feet	Rs. 0.42 lakh	50%	Rs. 0.34 lakh	40%
(xii) 6 feet	Rs. 0.448 lakh	50%	Rs. 0.358 lakh	40%
(xiii) 7 feet	Rs. 0.476 lakh	50%	Rs. 0.381 lakh	40%
(xiv) 8 feet	Rs. 0.504 lakh	50%	Rs. 0.403 lakh	40%
(xv) Roto-puddler	Rs. 1.00 lakh	50%	Rs. 0.80 lakh	40%
(xvi) Reversible Hydraulic plough (2 bottom)	Rs. 0.70 lakh	50%	Rs. 0.56 lakh	40%
(xvii) Reversible Hydraulic plough (3 bottom)	Rs. 0.895 lakh	50%	Rs. 0.716 lakh	40%
(xviii) Reversible Mechanical plough (2 bottom)	Rs. 0.40 lakh	50%	Rs. 0.32 lakh	40%
(xix) Reversible Mechanical plough (3 bottom)	Rs. 0.50 lakh	50%	Rs. 0.40 lakh	40%
(xx) Sub - soiler	Rs.0.55 lakh	50%	Rs. 0.45 lakh	40%
(xxi) Trench makers (PTO operated)	Rs. 1.50 lakh	50%	Rs. 1.50 lakh	40%
(xxii) Bund former (PTO operated)	Rs. 1.50 lakh	50%	Rs. 1.20 lakh	40%
(xxiii) Backhoe Loader Dozer (Tractor operated)	Rs. 3.50 lakh	50%	Rs. 2.80 lakh	40%
(xxiv) Power Harrow (PTO operated)	Rs. 0.30 lakh	50%	Rs. 0.25 lakh	40%
(xxv) Furrow opener	Rs. 0.30 lakh	50%	Rs. 0.25 lakh	40%
(xxvi) Bund former	Rs. 0.35 lakh	50%	Rs. 0.30 lakh	40%
(xxvii) Crust breaker	Rs. 1.00 lakh	50%	Rs. 0.80 lakh	40%
(xxviii) Roto cultivator	Rs. 1.00 lakh	50%	Rs. 0.80 lakh	40%
(xxix) Power Harrow(PTO operated)	Rs. 1.00 lakh	50%	Rs. 0.80 lakh	40%
B. Sowing , Planting , Reaping and Digging Equipments:				
(i) Raised Bed Planter	Rs. 0.35	50%	Rs.0.30	40%
(ii) Seed drill/zero till seed drill (9 tines)	Rs.0.20	50%	Rs.0.16	40%
(iii) Potato Digger	Rs.0.40	50%	Rs.0.35	40%
(iv) Tractor drawn reaper	Rs.0.75	50%	Rs.0.60	40%
(v) Onion harvester	Rs.0.80	50%	Rs.0.80	40%
Seed cum fertilizer drill/Zero till Seed cum fertilizer drill				
(vi) 9 tines	Rs.0.213	50%	Rs.0.170	40%

(vii) 11 tines	Rs.0.241	50%	Rs.0.193	40%
(viii) 13 tines		50%		40%
(ix) 15 tines		50%		40%
(x) Direct Rice Seeder (DRS)		50%		40%
(i) Post Hole digger (ii) Potato Planter (automatic) (iii) Ground nut digger (iv) Sugar cane cutter/Stripper/planter, (v) Multi crop planter (vi) Zero -till multi crop planter (vii) Ridge furrow planter	Rs. 0.75 lakh	50%	Rs. 0.60 lakh	40%
(viii) Happy/Turbo Seeder (9 tines)	Rs. 0.728 lakh	50%	Rs. 0.582 lakh	40%
(ix) Happy/Turbo Seeder (10 tines)	Rs. 0.756 lakh	50%	Rs. 0.605 lakh	40%
(x) Happy/Turbo Seeder (11 tines)	Rs. 0.784 lakh	50%	Rs. 0.627 lakh	40%
(xi) Pneumatic Planter (xii) Pneumatic vegetable transplanter, (xiii) Pneumatic vegetable seeder	Rs. 2.25 lakh	50%	Rs. 1.80 lakh	40%
(xiv) Cassava Planter	Rs. 0.75 lakh	50%	Rs. 0.60 lakh	40%
(xv) Manure spreader	Rs. 0.75 lakh	50%	Rs. 0.60 lakh	40%
(xvi) Fertilizer Spreader – PTO operated	Rs. 0.75 lakh	50%	Rs. 0.60 lakh	40%
(xvii) Plastic Mulch Laying Machine	Rs. 0.75 lakh	50%	Rs. 0.60 lakh	40%
(xviii) Automatic rice nursery sowing machinery	Rs. 1.75 lakh	50%	Rs. 1.40 lakh	40%
(xix) Aqua ferti seed drill	Rs. 0.75 lakh	50%	Rs. 0.60 lakh	40%
(xx) Raised Bed Planter with inclined plate planter and shaper attachment.	Rs. 0.90 lakh	50%	Rs. 0.70 lakh	40%
C. Inter Cultivation Equipments				
(i) Grass/ Weed Slasher	Rs.0.75 Lakh	50%	Rs. 0.60 lakh	40%
(ii) Weeder (Engine operated above 5 BHP)	Rs.0.63 Lakh	50%	Rs. 0.50 lakh	40%
(iii) Weeder (PTO operated)	Rs.0.75 Lakh	50%	Rs. 0.60 lakh	40%
D. Harvesting & Threshing Equipments (Operated by engine/electric motor above 5 hp and tractor of above 35 BHP tractor)				
(i) Ground Nut Pod Stripper	Rs.1.00 Lakh	50%	Rs. 0.80 lakh	40%
(ii) Thresher/Multi crop Threshers upto 4				

tonne/hr capacity				
(iii) Paddy Thresher				
(iv) Chaff Cutter				
(v) Forage Harvester				
(vi) Maize sheller				
(vii) Crop Reaper cum Binder (tractor drawn)	Rs.1.50 Lakh	50%	Rs. 1.20 lakh	40%
(viii) Combine Harvester (self propelled, upto 14 feet cutter bar)	Rs.8.00 Lakh	50%	Rs. 6.40 lakh	40%
(ix) Combine Harvester (Tractor operated (without tractor), upto 10 feet cutter bar)	Rs.3.00 Lakh	50%	Rs. 2.40 lakh	40%
(x) Combine Harvester (track, 6-8 feet cutter bar)	Rs.11.00 Lakh	50%	Rs. 8.80 lakh	40%
(xi) Combine Harvester (track, below 6feet cutter bar)	Rs.7.00 Lakh	50%	Rs. 5.60 lakh	40%
(xii) Thresher/Multi crop threshers above 4 tonne/hr capacity	Rs.2.5 Lakh	50%	Rs. 2.00 lakh	40%
(xiii) Infielder	Rs.0.63 lakh	50%	Rs.0.50 lakh	40%
(xiv) Mower	Rs.1.00 Lakh	50%	Rs. 0.80 lakh	40%
(xv) Flail Harvester				
(xvi) Mower shredder (All Purpose/All crops				
E. Equipments for Residue management/Hay and Forage Equipments:				
(i) Sugarcane thrash Cutter	Rs.1.25 Lakh	50%	Rs. 1.00 lakh	40%
(ii) Coconut Frond Chopper,	Rs.0.63 Lakh	50%	Rs. 0.50 lakh	40%
(iii) Hay Rake	Rs.1.50 Lakh	50%	Rs. 1.20 lakh	40%
(iv) Balers (Round) (14-16 kg per bale)	Rs.2.00 Lakh	50%	Rs. 1.60 lakh	40%
(v) Balers (Round) (above 16-25 kg per bale)	Rs.5.50 Lakh	50%	Rs. 4.40 lakh	40%
(vi) Balers (Round) (180-200 kg per bale)	Rs.9.00 Lakh	50%	Rs. 7.20 lakh	40%
(vii) Baler (Rectangular 18-20 kg per bale)	Rs.6.00 Lakh	50%	Rs. 4.80 lakh	40%

(viii) Wood chippers	Rs.1.25 Lakh	50%	Rs. 1.00 lakh	40%
(ix) Sugarcane ratoon manager	Rs. 1.25 Lakh	50%	Rs. 1.00 lakh	40%
(x) Cotton stalk uprooter	Rs.0.75 Lakh	50%	Rs. 0.60 lakh	40%
(xi) Straw reaper	Rs.1.30 Lakh	50%	Rs. 1.04 lakh	40%
(xii) Feed block machine (above 200 kg/hr)	Rs.3.00 Lakh	50%	Rs. 2.40 lakh	40%
(xiii) Stubble shaver	Rs.0.80 Lakh	50%	Rs. 0.64 lakh	40%
Straw Chopper/Shreder/Melcher				
(xiv) Mounted type 5 ft	Rs.0.672 Lakh	50%	Rs. 0.538 lakh	40%
(xv) Mounted type 6 ft	Rs.0.728 Lakh	50%	Rs. 0.582 lakh	40%
(xvi) Mounted type 7 ft	Rs.0.784 Lakh	50%	Rs. 0.627 lakh	40%
(xvii) Mounted type 8 ft	Rs.0.840 Lakh	50%	Rs. 0.672 lakh	40%
(xviii) Trailed type	Rs.1.26 Lakh	50%	Rs. 1.01 lakh	40%
(xix) Combo type	Rs.1.40 Lakh	50%	Rs. 1.12 lakh	40%
(xx) Super Straw Management System (Super SMS) To be attached with Combine harvester to	Rs.0.56 Lakh	50%	Rs. 0.45 lakh	40%
(xxi) Shrub Master/Cutter cum spreader	Rs.0.25 Lakh	50%	Rs. 0.18 lakh	40%
(xxii) Rotary Straw slasher	Rs.0.25 Lakh	50%	Rs. 0.18 lakh	40%
(xxiii) Briquette Making Machine (500-1000 kg/hr capacity)	Rs.5.00 Lakh	50%	Rs. 4.00 lakh	40%
All manual /animal drawn equipment/implements/Tools				
A. Land Development , tillage and seed bed preparation equipments:				
(i) MB Plow	Rs. 0.10 lakh	50%	Rs. 0.08 lakh	40%
(ii) Disc Plow				
(iii) Cultivator				
(iv) Harrow				
(v) leveler Blade				
(vi) Furrow opener				
(vii) Ridger				
(viii) Puddler				
B. Sowing and Planting Equipments:				

(i) Paddy planter, (ii) Seed cum fertilizer drill, (iii) Raised Bed Planter, (iv) Planter, (v) Dibbler (vi) Equipments for raising paddy nursery (vii) Marker for SRI (viii) Seed treating drum (ix) Rice-wheat seeder	Rs. 0.10 lakh	50%	Rs. 0.08 lakh	40%
(x) Drum Seeder (Below 4 Row)	Rs. 0.03 lakh	50%	Rs. 0.025 lakh	40%
(xi) Drum Seeder (Above 4 Row)	Rs.0.04 lakh	50%	Rs. 0.030 lakh	40%
C. Harvesting & Threshing Equipments:				
(i) Ground Nut Pod Stripper (ii) Thresher (iii) Winnowing fan (iv) Tree climber (v) Horticulture Hand tools (vi) Maize sheller (vii) Feed block machine (ix) Spiral grader	Rs.0.10 lakh	50%	Rs. 0.08 lakh	40%
(x) Chaff Cutter (upto 3')	Rs. 0.05 lakh	50%	Rs. 0.04 lakh	40%
(xi) Chaff Cutter (above 3')	Rs.0.063 lakh	50%	Rs. 0.05 lakh	40%
D. Inter Cultivation Equipments:				
(i) Grass Weed Slasher, (ii) Weeder, (iii) Conoweeder (iv) Garden Hand Tools	Rs. 0.012 lakh	50%	Rs. 0.010 lakh	40%
Self Propelled/other Power Driven Horticultural Machinery				
Chain Saw /Wheel Barrow /Mango Grader/Planter and other suitable self propelled machineries and equipments for horticulture crops.	Rs.0.75 lakh	50%	Rs.0.60 lakh	40%
Manual Horticultural equipments				
(i) Aluminium Ladder/Ladder	Rs.0.15 lakh	50%	Rs.0.12 lakh	40%

(ii) Aluminium Pole				
(iii) Plucker				
Post Harvest Equipments for food grains ,oil Seeds and Horticultural Equipments	Rs.1.80 lakh	60%	Rs.1.50 lakh	50%
Establishment of PHT units for transfer of primary processing technology, value addition, low cost scientific storage, packaging units and technologies for by-product management in the production catchments.				
(i) Mini Rice Mill	Rs.2.40 lakh	60%	Rs.2.00 lakh	40%
(ii) Mini Dal Mill	Rs.1.50 lakh	60%	Rs.1.25 lakh	40%
(iii) Millet Mill	Rs.5.40 lakh	60%	Rs.4.50 lakh	40%
(iv) Oil Mill with filter press(for all types of Horticulture/Food grain/oilseed crop)	Rs.3.00 lakh	60%	Rs.2.50 lakh	40%
(v) Extractor (for all types of Horticulture/Food grain/oilseed crop)	Rs.1.80 lakh	60%	Rs.1.50 lakh	40%
(vi) Pomegranate Aril Extractor	Rs.1.80 lakh	60%	Rs.1.50 lakh	40%
(vii) Custard Apple Pulper (for all types of Horticulture/Food grain/oilseed crop)	Rs.1.80 lakh	60%	Rs.1.50 lakh	40%
(viii)Dehydration unit/Pricking Machine/Humidifier (for all types of Horticulture/Food grain/oilseed crop)	Rs.1.80 lakh	60%	Rs.1.50 lakh	40%
(ix) Packing Machines(for all types of Horticulture/Food grain/oilseed crop)	Rs.3.00 lakh	60%	Rs.2.40 lakh	40%
(x) All types of Power driven Dehuskar /sheller /Threshers /Harvesters / De-spiking/ Deconing Machine/Peeler/ Spliter /Stripper(for all type of Horticulture / food grain/oil seeds Crops)	Rs.0.75 lakh	60%	Rs.0.60 lakh	40%
(xi) All types of Boiler/Steamer/Drier (for all types of Horticulture/Food	Rs.1.00 lakh	60%	Rs.0.80 lakh	40%

grain/oilseed crop)				
(xii) All types of Solar Driers (for all type of Horticulture / food grain/ oil seeds Crops) with floor area of about 400 to 1000 sq. feet.	Rs.3.50 lakh	60%	Rs.3.00 lakh	40%
(xiii) All types of Washing Machines (for all types of Horticulture/Food grain/oilseed crop)	Rs.0.60 lakh	60%	Rs.0.50 lakh	40%
(xiv)All types of Grinder/Pulveriser/ Polisher (for all types of Horticulture /Food grain/oilseed crop)	Rs.0.60 lakh	60%	Rs.0.50 lakh	40%
(xv) All types of Cleaner cum Grader/Gradient separator /specific gravity separator (for all types of horticulture/Food grain/oilseed crop)	Rs.1.00 lakh	60%	Rs.0.80 lakh	40%
Plant Protection Equipments				
(a) Manual sprayer: Knapsack/foot operated sprayer.	Rs. 0.0075 lakh	50%	Rs. 0.006 lakh	40%
(b) Powered Knapsack sprayer/Power Operated sprayer (capacity 8 - 12 lts):	Rs. 0.031 lakh	50%	Rs. 0.025 lakh	40%
(c) Powered Knapsack sprayer/Power Operated sprayer (capacity above 16lts)	Rs. 0.05 lakh	50%	Rs. 0.04 lakh	40%
(d) Tractor Operated Sprayer (air carrier/assisted)	Rs. 1.25 lakh	50%	Rs. 1.00 lakh	40%
(e) Tractor Operated Sprayer (boom type):	Rs. 0.37 lakh	50%	Rs. 0.28 lakh	40%
(f) Eco Friendly Light Trap	Rs. 0.015 lakh	50%	Rs. 0.012 lakh	40%
(g) Tractor Operated Electrostatic Sprayer	Rs. 2.50 lakh	50%	Rs. 2.00 lakh	40%
(h) Bird Scarer	Rs. 0.75 lakh	50%	Rs. 0.60 lakh	40%
Specialized Agricultural Machinery				
(a) Solar operated/electric operated animal deterrent bioacoustics equipment (with solar panel)	Rs. 0.35 lakh	50%	Rs. 0.28 lakh	40%

Solar operated/electric operated Animal deterrent bioacoustics equipment (without solar panel)	Rs. 0.25 lakh	50%	Rs. 0.20 lakh	40%
Solar operated/electric operated Hydro ponic machine for raising nursery of crops	Rs. 6.00 lakh	50%	Rs. 4.80 lakh	40%

Assistance for Soil Improvement

S.No.	Type of Assistance	Criteria for Assistance / Maximum Limit	Scheme / Component
1	Distribution of micronutrients and soil ameliorants	Rs.2500/- per hectare.	Soil Health card scheme
1a	Supply of gypsum phosphogypsum / bentonitesulphur. Wheat& Pulses	50% cost of the material + transportation limited to Rs.750/- per hectare.	National Food Security Mission (NFSM), BGR
2	Plant protection chemicals	Insecticides, fungicides, bio-pesticides, bio-agents, micronutrients, bio-fertilisers etc., @ 50% of the cost limited to Rs. 500/- per hectare.	National Food Security Mission (Oil Seed & Oil Palm)/ NFSM & BGREI)
3	Adoption of organic farming	Rs. 10,000 per hectare for maximum area of 4 ha per beneficiary spread over a period of 3 years involving assistance of Rs. 4000 in first year and Rs. 3000 each in second and third year	National Horticulture Mission (NHM)/ (HMNEH) Sub schemes under (MIDH)
4	Vermi-Compost Unit (dimension of permanent structure to be administered on)	Rs. 50,000 /- per unit (having dimension of 30 ft x 8 ft x 2.5 ft or 600 cft, on prorata basis)	NHM/HMNEH Sub schemes under MIDH
5	High Density Poly Ethylene (HDPE) Vermi Bed	Rs. 8,000 /- per unit (having dimension of 12 ft x 4 ft x 2 ft or 96 cu ft, on prorata basis and is 15907:2010 to be administered on)	NHM/HMNEH Sub schemes under MIDH

6	Promotion of Integrated Nutrient Management	Rs.1200 /- per hectare (upto an area of 4 hectares)	NHM/HMNEH Sub schemes under MIDH
7	Supply of gypsum phosphogypsum / bentonitesulphur. Wheat& Pulses	50% of the cost limited to Rs. 750/ - per hectare	National Food Security Mission (NFSM), BGREI
8	Micronutrients (Rice, Wheat, Pulses & Nutri-Cereals)	50% of the cost limited to Rs. 500/- per hectare	NFSM, BGREI
9	Lime/liming materials (Rice & Pulses)	50% of the cost of the material limited to Rs. 1000/ha.	NFSM, BGREI
10	Bio-fertilizers (Pulses Nutri-Cereals)	50% of the cost limited to Rs.300/- per ha.	BGREI /NFSM
11	Setting up of new Mobile/Static Soil Testing Laboratories (MSTL/ SSTL) Training	33% of total project cost limited to Rs 25 lakhs /lab for individuals, private agencies through NABARD as capital investment for 10,000 samples/annum analysing capacity.	National Mission for Sustainable Agriculture (NMSA)
12	Setting up of state-of-the-art liquid/carrier based Biofertilizer / Biopesticide units	25% of cost limited to Rs. 40 lakhs per unit for individuals/private agencies through NABARD as capital investment of 200 TPA production capacity	NMSA
13	Reclamation of Problem Soil	Alkaline / Saline Soil - Rs. 60,000 per ha. Acidic Soil - Rs.15,000/- per ha	RKVY sub-scheme on Reclamation of Problem Soil (RPS).
14	Setting up micro soil testing lab developed by ICAR	44 % of the cost, limited to Rs 44,000 /lab or individuals/private agencies through NABARD as capital investment for 3000 TPA production capacity	Soil Health Card
15	Setting up soil testing project at village level	75 % of the cost or Rs 3,75,000 /lab whichever is lower	Soil Health Card

S.No.	Type of Assistance	Criteria for Assistance / Maximum Limit	Scheme / Component
	Assistance for Seed Distribution		
A:	(i) Hybrid Seed - (Rice) (ii) Certified Seed of HYV - (Rice and Wheat)	(1) 50 % of cost limited to Rs. 10,000 per quintal (2)50% of the cost limited to Rs. 1000/qtl. for varieties more than 10 years of age and Rs. 2000/qtl for varieties less than 10 years of age	BGREI BGREI
2	Distribution of Seeds (i) HYV Seeds a) Rice and Wheat b) Coarse Cereals c) Pulses (ii) Hybrid Seeds a) Rice b) Coarse Cereals	Rs. 10/-per kg or 50% of cost whichever is less for > 10 years Rs. 20/-per kg or 50% of cost whichever is less for < 10 years Rs. 15 per kg or 50% of cost whichever is less for > 10 years Rs. 30 per kg or 50% of cost whichever is less for > 10 years Rs.25 per kg or 50% of cost whichever is less for > 10 years Rs. 50 per kg or 50% of cost whichever is less for < 10 years Rs. 100 per kg or 50% of cost whichever is less Rs. 100 per kg or 50% of cost whichever is less	NFSM NFSM NFSM NFSM NFSM
3	Oilseeds (groundnut, soybean, sunflower, toria, safflower, sesame, niger, mustard, rapeseed, linseed and castor)	Assistance @ 50% of cost limited to Rs. 4000/qtl for varieties of oilseeds not older than 15 years except Sesame. Assistance for distribution of hybrid seeds and variety of sesame is Rs. 8000/qtl	National Mission on Oilseed & Oil Palm (NMOOP)
4	Oil palm seeding	@ 85% of the cost of planting material limited to Rs. 12000/ha for entire land holding/planting area of the farmers.	National Food Security Mission (Oil Seed & Oil Palm)
5	For all crops, distribution of foundation/ certified seeds for production of quality seeds to improve the quality of	50% of the cost of seeds of cereals, 60% of the cost of seeds of oilseeds, pulses, fodder, green manure crops etc. required for a one-acre area per farmer	Sub- Mission on Seed and Planting Material (SMSP) under the component Seed Village Programme.

	farm-saved seeds for Himalayan states and North Eastern states (GOI share 90% and these states share 10%)		
6	Distribution of foundation/certified seeds of oilseeds, pulses, fodder, and green manure crops etc. for farmers, SHGs, FPOs etc. Himalayan states and North Eastern states (GOI share 90% and these states share 10%)	75% cost of seeds of oilseeds, pulses, fodder, green manure crops etc.	Sub Mission on Seeds and Planting Material under certified production of oilseeds, pulses, fodder and green manure crops through Seed Village Programme.
7	Cultivation / maintenance cost as assistance / maintenance for gestation period for oil palm	50% of cost during gestation period for four years with a ceiling of Rs. 20,000/- per hectare @ Rs. 5000/ha/year up to 25 ha.	-do-
8	Jute and Mesta Seed Village Programme	Rs.5500/- per quintal of certified seed produced	NFSM Commercial Crops (Jute)
9	Purchase of breeder seeds of oilseeds from ICAR and SAUs	Reimbursement of full cost of breeder seeds as fixed by Seed Division of DAC &FW and ICAR	National Food Security Mission (Oil Seed & Oil Palm)
B: Assistance for Production of Foundation and Certified Seeds			
10	(i) Hybrid Seed - Paddy (ii) Certified Seed of HYV - Rice and Wheat	(i) 50 % of cost limited to Rs 10000/- per quintal (ii) 50 % of cost limited to Rs 2000/- per quintal	BGREI
11	Pulses (arhar, moong, urad, lentil, field pea, gram, rajma)	HYV seeds Rs. 50 per kg or 50% of the cost whichever is less for ten year old varieties	National Food Security Mission (NFSM)

	and moth)														
12	Nutri-Cereals (Jowar, Bajra, Ragi& other small millets)	Rs. 3000/- per quintal	National Food Security Mission (NFSM)												
13	Assistance for boosting seed production in private sector including individual/ entrepreneurs, self help groups etc.	Credit-linked back-ended capital subsidy at the rate of 40% of project cost in general areas and 50% in case of hill areas and scheduled areas subject to upper limit of Rs.150 lakhs per project	Sub Mission on Seeds and Planting Material (SMSP) under Assistance for Boosting of Seed Production in Private Sector												
C: For all Oilseeds Crops															
14	Assistance for production of Foundation Seeds	Rs. 2500/- per quintal for all varieties/hybrids released during the last 10 years and an additional assistance of Rs. 100/- per quintal on the varieties/Hybrids released in the last 5 years. 75% of subsidy amount is meant for farmers and 25% for seed producing agencies.	National Food Security Mission (Oil Seed & Oil Palm)												
15	Production of Certified Seeds	- Do-	- do -												
16	Seed Infrastructure Development	Assistance up to 50% for creation of seed infrastructure including threshing floor, seed storage godowns with the provision for dehumidification, irrigation facilities including tube wells/bore wells, motor pumps, sprinklers, excluding drip, lining of channel, leveling of field, fencing on the farms, electrification of office building, farm machinery etc	- do -												
15a.	Creation of Seed Infrastructure facilities (for Public Sector only) Seed Processing Facilities	(100% GoI share) 1-Establishment of Seed Processing Plants. Grant-in aid is available according to modular design of 1000 MT, 200MT, 3000MT and 5000 MT (annual capacity seed processing capacity plants wheat basis). The assistance shall be available at the following rate:	Sub- Mission on Seeds and Planting Materials (SMSP)												
		<table border="1"> <thead> <tr> <th>Items</th> <th>Annual capacity (MT)</th> <th>1000 MT</th> <th>2000 MT</th> <th>3000 MT</th> <th>4000 MT</th> </tr> </thead> <tbody> <tr> <td>Main equipment</td> <td>Rs. In lakh</td> <td>27.90</td> <td>32.90</td> <td>47.10</td> <td>56.20</td> </tr> </tbody> </table>	Items	Annual capacity (MT)	1000 MT	2000 MT	3000 MT	4000 MT	Main equipment	Rs. In lakh	27.90	32.90	47.10	56.20	
Items	Annual capacity (MT)	1000 MT	2000 MT	3000 MT	4000 MT										
Main equipment	Rs. In lakh	27.90	32.90	47.10	56.20										
		etc.													

		Supporting Equipments etc	Rs. In lakh	9.90	10.10	13.90	20.70	21.30		
		Total Cost	Rs. In lakh	37.80	43.00	61.00	76.90	84.10		
		The implementing agencies will have the flexibility to establish seed processing plant of desired capacity as assessed by them and assistance will be provided on prorata basis.								
15 b.		Seed Storage Facilities The financial assistance for construction of various types of seed storage godowns including pallets/packs cover, sprayers, dusters etc. Required for safe storage of seed is available as under:							Sub-Mission on Seeds & Planting Material (SMSP)	
	D. National Seed Reserve									
16	Seed of short and medium duration crops varieties during natural calamities and unforeseen conditions	1. Cost of Seeds - 100% 2. Maintenance cost I. Processing & Packing charges – Rs. 300/Qtls II Transportation charges – Rs. 200/Qtls 3. Cost of seed storage infrastructure – Rs. 57.74 Lakh for 10000 Qtlcapacity. 4. Assistance for purchase of machineries, plant building, receiving shed, and drying platform – Rs. 70.50 lakh for 10000 qtl capacity. 5. Cost of material handling equipments – Rs. 50 per qtls (One Time). 6. Cost of services outsourced for fumigation, spraying,							Submission on Seeder Planting Material (SMSP)	

		<p>maintenance of dust free environment staking, de-staking and other operation involving labour – Rs. 10/qtls (Every Year).</p> <p>7. Cost of condemnation unfit seeds – Price differential between seed and grain of 10% quantity of targeted stock.</p> <p>8. Cost of computerization</p>	
--	--	--	--

S.No.	Type of Assistance	Quantum of Assistance	Scheme
A: Assistance for Training and capacity building of Farmers			
1	Training of groups of 50-150 farmers on seed production and seed technology	Rs. 15,000/- per group	Seed Village Programme (SMSP)
2	Assistance for training on seed production and seed technology for a group of 50 to 150 farmers.	Rs. 15,000 per training (i) At the time of sowing of seed crop: training on seed production technique, isolation distance, sowing practices and other agronomic practices. (ii) At the time of flower initiation stage of the crop. (iii) After harvest and at the time of seed processing	Certified seed production of oilseeds, pulses, fodder and green manure crops through Seed Village Programme, SMSP
3	Training of Farmers in recognized institutes (stipend, boarding, lodging and to & fro transportation cost would be provided to farmers).	Rs.5200/- per farmer per month	Post Harvest Technology Management
4	Farmers' training	Rs.24,000/- per training for 2 days for 30 farmers per batch (@ Rs.400/- per farmer per day).	NMOOP
5	Training on plant protection measures to groups of 40 farmers	i) Rs.29,200/- per Farmer Field School of NGOs/ Private Bodies ii) Rs.26,700/- in case of state govt. organizations.	Plant Protection Scheme

6	Training on Repair, Maintenance, Operation and selection of various Agricultural Machinery & Equipments and Post Harvest Management	Rs.4000/- per person per week	Sub-Mission on Agricultural Mechanization (SMAM)
7	2 days training of farmers on Vegetable Production and Related Areas	Rs.1500/- per training / farmer excluding transport	Vegetable Initiative for Urban Clusters (VIUC)
8	Promotion of Farmers' Associations/ Groups of 15-20 farmers and tie up with Financial Institutions and Aggregators	Rs.4075/- per farmer in three installments spread over 3 years	VIUC
9	Organization of awareness programme for the farmers on the GraminBhandaran Yojana by National Institute of Agricultural Marketing (NIAM), Jaipur (for 3 days duration)	Rs.30,000/- programme	GraminBhandaran Yojana
10	Training of farmers outside the state upto 50 man-days / Block	Rs.1250/- per farmer per day which includes transportation, boarding and lodging of farmers	ATMA Scheme (NMAET), Sub schemes NHM/ HMNEH under MIDH
11	Training of farmers within the State (100 man-days / block)	Rs.1000/- per farmer per day which includes transportation, boarding and lodging of farmers	ATMA Scheme (NMAET)
12	Training of farmers within the district (1000 man-days per Block)	Rs.400/- per farmer per day which includes transportation, boarding and lodging of farmers for residential training; otherwise, Rs.250/- per farmer per day if training is not residential	ATMA Scheme (NMAET), Sub schemes NHM/ HMNEH under MIDH
13	Organization of demonstrations (125 demonstrations per	Upto Rs.4000/- per demonstration plot (0. 4 hectares)	ATMA Scheme (NMAET)

	Block)		
14	Farm School (Training to 25 farmers per season at six critical stages of crop).	Rs.29,414/- per Farm School	ATMA Scheme (NMAET)
15	Exposure Visit of farmers outside the state for 7 days (4 farmers per Block)	Rs.1000/- per farmer per day which includes transportation, boarding and lodging of farmers	ATMA Scheme
16	Exposure visit of farmers within the State for 5 days (32 farmers per Block)	Rs.500/- per farmer per day which includes transportation, boarding and lodging of farmers	ATMA Scheme (NMAET), Sub schemes NHM/ HMNEH under MIDH
17	Exposure Visit of farmers within the District not exceeding 3 days (100 farmers per Block)	Rs.300/- farmer/ day which includes transportation, boarding and lodging of farmers	ATMA Scheme
18	a) Capacity building, skill development of farmers' groups and for other support services (for 20 groups per block) b) Seed Money to these groups as one time grant for taking up income generating activity c) Food Security Groups (2 groups / block)	Rs.5000/- per group Rs.10,000/- per group Rs.10,000/- per group	ATMA Scheme
19	Front Line Demonstrations (FLD)in selected villages by Soil Testing Laboratories	Rs.20,000/- per demonstration 100% of assistance to ICAR and ICRISAT with a ceiling of Rs.12,000/- per ha for groundnut, Rs.7,500/-per ha for soyabean, rapeseed, mustard,sun flower, Rs.6,000/- per ha	National Project on Management of Soil Health & Fertility National Food Security Mission (Oil Seed & Oil

	<p>Front Line Demonstration (FLD)</p> <p>(i) Rice, Wheat and Pulses (ii) Coarse Cereal/Nutri-Cereals</p> <p>2. Cluster Front Line Demonstration (FLD) of Pulses through KVKs</p>	<p>for sesame,safflower, niger, linseed and castor and Rs.5000/- per ha . Maximum of one demonstration will be allowed to one farmer for an area of one hectare under each crop. Size of the FLD plot will be one hectare but not less than 0.4 hectare.</p> <p>Rs. 9000/- per ha Rs. 6000/- per ha Rs. 9000/- per ha</p>	<p>Palm)</p> <p>NFSM NFSM NFSM</p>
20	<p>Demonstrations of Improved Packages of Practices by states</p> <p>(i) Rice & Wheat (ii) Pulses (iii) Coarse Cereal /Nutri-Cereals</p> <p>Cropping system based demonstrations by states only</p> <p>(i) Rice (ii) Wheat & Pulses</p>	<p>Rs. 9000/- per ha Rs. 9000/- per ha Rs. 6000/- per ha</p> <p>Rs. 15000/- per ha Rs. 15000/- per ha</p>	<p>NFSM &BGREI NFSM NFSM</p> <p>NFSM & BGREI NFSM</p>
21	<p>Field level Demonstration on alternative retting technologies(Jute Crop)</p>	<p>Rs.20,000/- per demonstration(Rs.17,000/- for inputs and Rs.3000/- for contingency)</p>	<p>NFSM: Commercial Crop Jute</p>
22	<p>FLD on production technologies / intercropping (Jute Crop)</p>	<p>Rs. 9000 per ha. (Rs. 8000 for inputs &Rs. 1000 for contingency)</p>	<p>NFSM: Commercial Crop Jute</p>
23	<p>Front Line Demonstration on ICM (Integrated Crop Management)</p>	<p>Rs.8000/- per hectare (Rs.7000/- for inputs and Rs.1000/- for contingency)</p>	<p>NFSM: Commercial Crop Cotton</p>
24	<p>Front Line Demonstration on Desi</p>	<p>Rs. 9000 per hectare (Rs. 8000 for inputs and Rs. 1000 for contingency)</p>	<p>NFSM: Commercial Crop Cotton</p>

	and ELs cotton and ELs cotton seed production		
25	Front line Demonstration on intercropping (0.4 ha size)	Rs. 8000 per hectare (Rs. 7000 for inputs and Rs. 1000 for contingency)	NFSM: Commercial Crop Cotton
26	Trials on High Density Planting System	Rs. 10,000 per ha (Rs. 9,000 for inputs and Rs. 1000 for contingency)	NFSM: Commercial Crop Cotton
27	Demonstration on intercropping and single bud chip technology with sugarcane	Rs. 9000 per ha. (Rs. 8000 for inputs and Rs. 1000 for contingency).	NFSM : Commercial Crop Sugarcane
28	Cropping system based training-A group of 30 farmers in 4 session of each training at the beginning of each Kharif and Rabi season and one each in Rice/ Wheat/Pulses/Nutri-Cereals.	Rs. 3500/- per session or Rs. 14000/-per training	NFSM &BGREI
29	Block demonstration on fields	Rs. 10,000/- per ha. for groundnut, Rs. 6000/- per ha. for Soyabean, Rs. 3000/- per ha for Rapeseed, Mustard, Sesame, Linseed & Niger and Rs. 4000/- for Sunflower	NFSM
30	Training on selection, operation and maintenance of tractors and other agricultural machines	Stipend of Rs.1200/- per farmer along with to and fro charges in ordinary class and also free lodging for user level course for the duration of one week to six weeks	Promotion and Strengthening of Agricultural Machines through Training, Testing and Demonstration

31	Training to farmers including field demonstrations; Capacity building of stakeholders /farmers through field visits on concept of Integrated Farming, Climate change adaptation, Good Agriculture Practices on soil, water and crop management.	Rs.10, 000/- per training session for 20 participants or more. Rs.20, 000/- per demonstration for a group of 50 participants or more.	RAD component of NMSA
32	Training and Demonstration on Soil Health	Training to farmers including field demonstrations; Rs. 10,000/-per training session for 20 participants or more. Rs. 20,000/-per Front Line Field Demonstration	Do

Water Harvesting & Irrigation

Broad Activity	Sub Activity	Pattern of Assistance	Name of Scheme
Water Harvesting & Irrigation	Water Carrying Pipes	Rs. 25/- per meter or 50% of the cost, whichever is less, with maximum limit of 600 meters and costing Rs. 15,000/-	NFSM
	Plastic/RCC based water harvesting structure/ farm pond/construction of community tank (100 meter x 100 meter x 3 meter) For smaller size ponds/tanks, cost will be admissible on pro rata basis, depending upon command area	Rs. 20 lakhs per unit in plains; and Rs. 25 lakhs per unit in hilly areas with 500 micron plastic lining/ RCC lining, for 10-hectare command area	NHM/HMNEH/NMSA Sub schemes under MIDH

<p>Water Storage in Farm Pond/ Dug well (Measuring 20 meter x 20 meter x 3 meter) by individual.</p> <p>For smaller size ponds/dug wells, cost will be admissible on pro rata basis</p>	<p>50% of cost and limited to Rs. 0.75 lakhs per beneficiary for plains &</p> <p>Rs. 0.90 lakhs / beneficiary for hilly areas with 300 micron plastic lining/RCC lining, for 2-hectare command area. In case of non-lined ponds 30%, less assistance will be provided.</p>	<p>NHM/HMNEH/NMSA Sub schemes under MIDH</p>
<p>(a) Construction of new Farm Ponds withlining to reduce the percolation losses</p> <p>(b) Water Harvesting Structures/ponds</p>	<p>Rs. 40,000/- per pond of 20m x 20m x 3m for construction and Rs. 40,000/- for lining purpose</p> <p>50% of the cost limited to Rs. 75,000/- for plains and Rs. 90,000/- for hilly areas including lining</p>	<p>NMOOP</p>
<p>Bore Well</p>	<p>100% assistance limited to Rs. 30,000/- per unit (BGREI)</p> <p>50% of the cost limited to Rs. 25,000/- per unit (NMOOP)</p>	<p>Bringing Green Revolution to Eastern India (BGREI)</p> <p>NMOOP</p>
<p>Shallow Tube Wells</p>	<p>100% assistance limited to Rs. 12,000/-</p>	<p>BGREI</p>
<p>Pump Set up to 10 HP</p>	<p>Rs. 10,000/- per pump set or 50% of the cost whichever is less.</p>	<p>NFSM</p>
<p>Water Harvesting System for individuals</p>	<p>50% of cost (Construction cost Rs. 125/- for plain / Rs. 150/- per cu m for hilly areas) limited to</p> <p>Rs. 75,000/-, for plain areas and Rs. 90,000/- for hilly areas including lining.</p> <p>For smaller size of the ponds/dug wells, cost admissible on pro rata basis. Cost for non-lined ponds/tanks will be 30% less.</p>	<p>NMSA</p>

Lining of Tanks/ Ponds constructed under MNREGA/WSDP etc.	50% cost of plastic/RCC lining limited to Rs. 25,000/- per pond/tank/well.	NMSA
Water Harvesting System for communities: Construction of Community tanks / on-farm ponds/check dams/reservoirs with use of plastic/RCC lining on public land.	100% of the cost limited to Rs. 20 lakhs/unit in plain areas, Rs. 25 lakhs/unit in hilly areas, for 10 ha of command area. For any other smaller size on pro rata basis depending upon the command areas. Cost for non-lined ponds/tanks will be 30% less.	NMSA
Construction of Tube Wells / Bore Wells (Shallow/Medium)	50% of the total cost of installation limited to Rs. 25,000/- per unit.	NMSA
Restoration/Renovation of small tanks	50% of the cost of renovation limited to Rs. 15,000/- per unit	NMSA
Pipe/pre-cast Distribution System	50% of the cost of system limited to Rs. 10,000/- per ha with assistance up to a maximum of 4 ha per beneficiary or group.	NMSA
Water lifting Devices (Electric, Diesel, Wind/ Solar)	50% of the cost of installation limited to Rs. 15,000/- per electric/diesel unit and Rs. 50,000/- per solar/wind unit.	NMSA

